

# PBS-400

Undersink drinking  
water system





# PBS-400

## Undersink drinking water system



The same commercial quality that makes Everpure the overwhelming choice for water filtration in restaurants is now also available for homes. Everpure's exclusive precoat filtration technology combines Micro-Pure and a unique pleated filter membrane to trap particles as small as 0.5 micron. This highly engineered design offers the largest filtering surface area, longer filter life and consistent performance.

### CONTAMINANT REDUCTION

- ▶ Microplastic
- ▶ Lead
- ▶ Cysts such as Giardia lamblia, Entamoeba histolytica and Cryptosporidium parvum
- ▶ Chlorine
- ▶ Taste & odor
- ▶ Dirt and cloudiness\*
- ▶ Mold and algae\*
- ▶ Particulates (oxidized iron, manganese and sulfides)\*



*\*As tested by Everpure, LLC*

### FEATURES & BENEFITS

- ▶ **The exclusive Fibredyne technology featured in the PBS-400, integrates sediment filtration with a carbon block, utilizing proprietary technology to immobilize carbon onto fibers. This design offers a filtration grade of 0.5 micron, exceptional dirt holding capacity, minimizes pressure drop, resists premature plugging, and provides higher flow rates eliminating the need of a side faucet.**
- ▶ This Everpure undersink drinking water system gives a great tasting water – all you want, on demand – for cost that's far less than bottled water

- ▶ **High flow rate of 8.3 Lpm**
- ▶ The high flow rate provided by this system avoids to install an extra faucet in the kitchen
- ▶ **Everpure systems reduce contaminants, yet retain vital minerals naturally present in water. So the water tastes crisp, clean and refreshing**
- ▶ Ideal for drinking and cooking purposes in your house or apartment
- ▶ **Adsorbs common earthy, moldy, fishy tastes, and odors**
- ▶ Premium Quality – Taste the difference: everything made with water will taste better: coffee, tea,

flavored water mix, juices, soups – even ice cubes.

- ▶ **Everpure's metal canister delivers commercial grade durability and quality**
- ▶ Built-in water shut off



# PBS-400

Undersink drinking water system



## SPECIFICATIONS

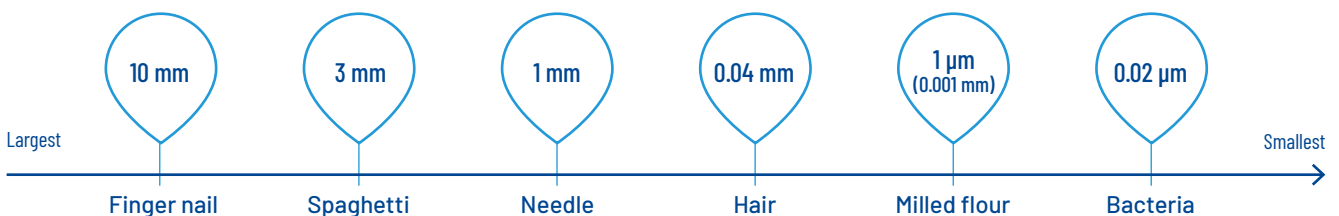
- ▶ **Flow rate**  
8.3 Lpm
- ▶ **Temperature**  
2-38°C - cold water use only
- ▶ **Pressure**  
0.7-8.6 bar
- ▶ **Capacity**  
11.356 L (approximately 1 year of water supply, depending on family size and the amount of water you drink)

## GENERAL INSTALLATION / MAINTENANCE REQUIREMENTS

- ▶ **Space requirement**  
51H x 13W x 13D cm including 6.5 cm of clear space under unit for cartridge change
- ▶ **Replacement of cartridge(s) when capacity is reached**, or when flow becomes too slow, but at least annually

## HOW SMALL IS A BACTERIA?

The exclusive precoat technology combines Micro-Pure filtration media and a unique pleated filter membrane **to reduce particles as small as 0.5 micron**. This design offers the largest filtering surface area, a longer filter life and consistent performance.





# IT'S WATER FILTRATION YOU CAN TRUST!

## The pure solution

Our products polish water to premium quality so that water is sparkling and free of unwanted tastes and odors. You'll taste the difference in every sip and everything made with water will taste better, too.

## The sensible solution

Our filters reduce lead amounts in your water – below the Federal Action Level of 10 ppb – as well as parasitic protozoan cysts and other microscopic particles that may be in your water supply.

## The convenient solution

Everpure systems are easily installed using common household tools. Our systems mount under your sink and are plumbed to a separate filter faucet. And cartridge replacement is easy, too – just like changing a light bulb.

## The practical solution

At only cents per liter, this system is less expensive per glass than bottled water or other drinking water systems and provides about a year's supply of water, depending on the size of your family and the amount of water you drink.



### System Tested and Certified by NSF International against NSF/ANSI Standard 42 and 53 for the reduction of:

#### Standard 42 - Aesthetic Effects:

##### Chemical Reduction

- Taste and Odor
- Chlorine

##### Mechanical Filtration

- Particulate Reduction: Class I

#### Standard 53 - Health Effects:

##### Chemical Reduction

- Lead

##### Mechanical Filtration

- Cyst

#### Standard 401:

##### Microplastic Reduction